

# Ninette Flat

**Semi-automatic labeling machine for square, rectangular and slightly egg-shaped oval products.**

Semi-automatic adhesive labeler - applies 1 label to products to flat surfaces (glass, PET, PVC).  
Machine adapted to square and rectangular formats.



## The Ninette Flat is a semi-automatic labeler equipped with :

- A labeling station suitable for products with flat surfaces (square, rectangular). The minimum labeling height is 5 mm and the maximum is 190 mm (standard). The height of the label application is adjusted manually by changing the height of the label plate.
- A 76 mm (standard) core on which the label roll is placed. This label roll is designed for a left-hand outer winding direction.
- A product detection sensor for automatic label application.
- A touch screen to control and adjust the machine as well as a daily product counter.

- A chassis on wheels for easy move of the machine.
- The machining of the roll; some products require this option to be correctly labeled: tests are carried out in our workshop to confirm this.
- Specific tooling for products that are not quite flat (slightly egg-shaped or oval).
- An ultrasonic sensor for clear labels.

*This machine is upgradeable: the above options can be added at the customer's premises with the intervention of a technician.*

## Limits of Ninette Flat

- Tapered and cylindrical products.
- Products with a diameter greater than 190 mm or 290 mm if it has the raised option.

*Before placing an order, we can carry out tests free of charge to ensure the feasibility of your project. Please do not hesitate to contact us!*

## Technical characteristics Ninette Flat

APPROXIMATE MASS (KG)	66 kg with frame
DIMENSIONS (WITH FRAME )	793 mm in width 1255 mm in height 625 mm of depth
POWER CONSUMPTION	1 kW
SUPPLY VOLTAGE	220 V mono
FREQUENCY	~ 50 Hz 16 A
CONTROL	by touch screen
IDEAL OPERATING TEMPERATURE	from 10°C to 30°C

**Please note that this machine requires an electrical power.**

## Technical focus n°1

### PRESCRIBED LABELING

For perfect label application, we recommend labeling filled products.

## Technical focus n°2

### ELECTRICAL CONNECTION

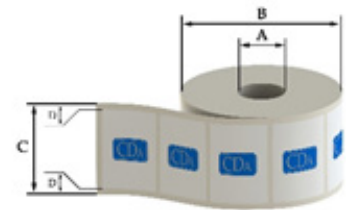
Electrical connection: 1 Cable 220 volts - length 3 metres - Domestic socket.

## Technical focus n°3

### ROLLING DIRECTION: OUTSIDE LEFT

The machine is designed for label rolls with a left-hand outer winding direction. In addition, the dimensions of the rolls must be as follows:

- a : max. chuck diameter = 76 mm
- b : max. coil diameter = 260 mm
- c : max. labelling height = 190 mm (290 mm en option)
- d : label gap = 3-5 mm



Minimum quality of the tape used : 90 g

*Important : Label reels should be stored in a dry place between 15°C and 18°C*

## Technical focus n°4

### DIGITAL DISPLAY

The color touch screen allows easy adjustment of several parameters such as:

- Label station and option selection.
- Timer settings (label output, spacing).
- Daily product counter

## Technical focus n°5

### MACHINED ROLLERS (optional)

If one of your products to be labeled has protrusions (as in the image below), the use of machined rollers may be essential.

## Technical focus n°6

### SPECIFIC TOOLS (optional)

In some cases, the shape of the product (ovoid) does not allow the Ninette Flat to label it correctly: an option is then necessary to hold the product flat.

## Technical focus n°7

### ULTRASONIC SENSOR (optional)

The ultrasonic label gap detection sensor is used to detect labels and transparent media. If you have transparent labels, this option is mandatory for the proper operation of the machine. In addition to detecting transparent labels, this sensor also detects opaque labels.

