

# Ninette Auto

## Semi-automatic labeling machine for cylindrical products.

Semi-automatic adhesive labeler – Applies up to 1 label (option with possibility of 2 labels) on cylindrical products (glass, PET, PVC).

Machine adapted to cylindrical formats with a diameter between 40 mm and 100 mm without additional tools.



## The Ninette Auto is a semi-automatic labeler equipped with :

- A frame with wheels for easy movement of the machine.
- A motorised conveyor (82.5mm wide).
- A labeling station suitable for cylindrical products. The minimum labeling height is 5 mm, and the maximum is 190 mm (standard, more if optional). The height of the label application is adjusted manually by changing the height of the label plate.
- A 76 mm (standard) or 40 mm (optional) core on which the label roll is placed. This label roll is designed for a left-hand outer winding direction.
- A product detection sensor for automatic label application.
- Pneumatic device to stabilize the containers for labelling products with diameters between 40 and 90 mm (standard).
- A rectangular table at the machine exit for receiving labeled products.
- A touch screen to control and adjust the machine as well as a daily product counter.

## Available options

- A 2nd label station for back labels onto cylindrical products. The height and adjustment are identical from the 1st label station.
- An extension in the height of the labeling station. This option allows you to increase the maximum labeling height to 290mm (compared to 190mm in standard).
- A Mini Kit to label small products
- The machining of the rollers for the rotation of the products. Some products require this option to be properly labeled: tests are carried out in our workshop to confirm this.
- An interchangeable pneumatic product pusher for a wider range.
- A program to apply front and back labels from the same roll.
- A marker / coder to print a DLC, a barcode, etc...
- A smoothing brush (otherwise known as a tamper evident flap) to smooth the label on top of the product.
- A detection sensor to align the label with a notch, seam, image, cap, weld etc.
- An ultrasonic sensor for clear labels.
- A label registration sensor

*This machine is upgradeable: the above options can be added at the customer's premises with our technician's visit.*

## Limits of Ninette Auto

- Tapered products.
- Products with a diameter greater than 100 mm and a height of 390 mm.

*Before placing an order, we can carry out tests free of charge to ensure the feasibility of your project. Please do not hesitate to contact us!*

## Technical characteristics Ninette Auto

APPROXIMATE MASS (KG)	110 kg with frame
DIMENSIONS (WITH FRAME )	1186 mm wide 1224 mm height 856 mm deep
POWER CONSUMPTION	1 kW
POWER SUPPLY	208 V single phase
FREQUENCY	~ 50 Hz 16 A
PNEUMATIC SUPPLY	60 PSI Dry, non-lubricated air
CONTROL	by touch screen
IDEAL OPERATING TEMPERATURE	from 10°C to 30°C

**Please note that this machine requires an electrical and pneumatic power supply**

## Technical focus n°1

### PRESCRIBED LABELING

For perfect label application, we recommend labeling filled products when they are made of PET.

## Technical focus n°2

### ELECTRICAL/ PNEUMATIC CONNECTION

Electrical connection: 1 Cable 208 volts single phase - length 18 feet - buy your own plug matching your outlet.

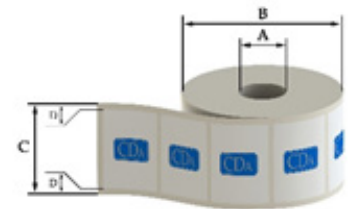
Pneumatic connection: 1 air connection on pressure gauge - Under 6 bars constant (Hose to be provided  $\emptyset$  Int/Ext = 8/10 mm).

## Technical focus n°3

### WINDING DIRECTION: OUTSIDE LEFT

The machine is designed for label rolls with a left-hand outer winding direction. In addition, the dimensions of the rolls must be as follows:

- a : max. chuck diameter = 76 mm
- b : max. coil diameter = 260 mm
- c : max. labeling height = 190 mm (290 mm en option)
- d : label gap = 3-5 mm



Minimum quality of the tape used : 90 g

*Important : Label reels should be stored in a dry place between 15°C and 18°C*

## Technical Focus 4

### TOUCH SCREEN

The color touch screen allows easy adjustment of several parameters such as:

- Label station and option selection.
- Times settings (label output, spacing).
- Daily product counter

## Technical focus n°5

### MOTORIZED CONVEYOR (optional)

The motorized conveyor is the element that ensures the transfer of your products from one end of the machine to the other. It is made up of an anodised aluminum profile which holds an acetal pallet chain (82.5mm wide). Lateral guides are also attached to the conveyor to prevent the containers from falling and to guide them in their trajectory.

## Technical focus n°6

### MACHINED ROLLERS (optional)

In order to label cylindrical products perfectly, it is necessary to ensure that the rollers (smoothers and platers) are suitable. The shape of the product determines the shape of the tools fitted to the machine. These tools are interchangeable and are made to measure.

## Technical focus n°7

### *MINI KIT (optional)*

The Mini Kit can be used to label small cylindrical products (diameter between 25 mm and 45 mm) or light products. The Mini Kit can be installed on the Ninette Auto.

## Technical focus n°8

### *ULTRASONIC SENSOR (optional)*

The ultrasonic label gap detection sensor is used to detect labels and transparent media. If you have transparent labels, this option is mandatory for the proper operation of the machine. In addition to detecting transparent labels, this sensor also detects opaque labels.

## Technical focus n°9

### *LABEL DETECTION SENSOR (optional)*

The «label detection sensor» allows a label application onto a bottle already labeled (a back label, a medal, etc.).

