

VS1000

Automatic capping machine

Operating principle of the capping station for the cylindrical bottle with a pump cap at a production rate of 1,200 to 1,400 caps/hour.

The cap or the pump are manually placed by an operator with a pre-capping and are automatically tightened by the capping machine.



The VS1000 is an automatic capping machine equipped with :

- Chassis Stainless steel tube structure and Satin stainless steel panels with covers, doors and fluid reception tank.
- A motorized conveyor 2000 mm in stainless steel.
- 1 electrical box.
- A spacing system with 2 pneumatic cylinders for the bottles and 2 detection cells (bottles and stoppers).
- 2 electric capping spindles with possible adjustment of the speed / acceleration.
- Capping by 2 rubber coated belts for a better transmission of the torque.
- Device for accompanying the capping head downwards.
- Height adjustment by electric motor with control from the touch screen.
- Machine complies with CE standards.

- An automatic product feeding system (cylindrical or rectangular feeding table, transfer plate...).
- An increase in the width of the conveyor (4.5" - 114 mm).
- A VS500 capping machine.
- A pneumatic pusher station.
- An accumulation system for reception of the products at the exit of the machine (cylindrical or rectangular accumulation table, a transfer plate...).

Before placing an order, we can carry out tests free of charge to ensure the feasibility of your project. Please do not hesitate to contact us!

Technical characteristics VS1000

APPROXIMATE MASS (LBS)	880 lbs - 400 kg (depending option)
------------------------	-------------------------------------

DIMENSIONS (WITH FRAME)	3.3 ft - 1000 mm in width 6.6 ft - 2000 mm in height 6.6 ft - 2000 mm of depth
-------------------------	--

POWER CONSUMPTION	1 kW
-------------------	------

POWER SUPPLY	208-250 V single phase
--------------	------------------------

FREQUENCY	~ 50 Hz 16 A
-----------	--------------

CONTROL	by digital display
---------	--------------------

IDEAL OPERATING TEMPERATURE	from 50°F to 90°F (10°C to 30°C)
-----------------------------	----------------------------------

Please note that this machine requires an electrical and pneumatic power supply.

Technical focus n°1

PNEUMATIC / ELECTRICAL CONNECTION

Pneumatic connection: 1 air connection on pressure gauge - Under 6 bars constant (Hose to be provided
 \varnothing Int/Ext = 8/10 mm)

Electrical connection: 1 Cable 208-250 volts single phase - length 18 feet - you will need to supply your plug matching your wall outlet

Technical Focus n°2

DIGITAL DISPLAY

The color touch screen allows easy adjustment of several parameters such as:

- The selection of the station and the options
- Setting of time delays (label output, spacing)
- Daily product counter

Technical Focus n°3

VS500

VS500 capping station including:

- A jar holding and stopping device for manual capping with a capping presence control cell
- A device for holding and stopping the cans under the capping head, with a pneumatic cylinder with a «V» tip and an anti-rotation plate
- Tightening of the pump/caps with two belts (lateral movement of the belts)
- Tightening torque and capping height adjustment

Technical focus n°4

PNEUMATIC PUSHER

Pushing station including:

- A device for detecting and stopping the bottles for the manual placement of the caps
- Cap presence control cell
- A bottle detection and stopping device under the driving head, with pneumatic cylinder and centering V
- A pneumatic cylinder adjustable in height to push the cap on the neck of the bottle

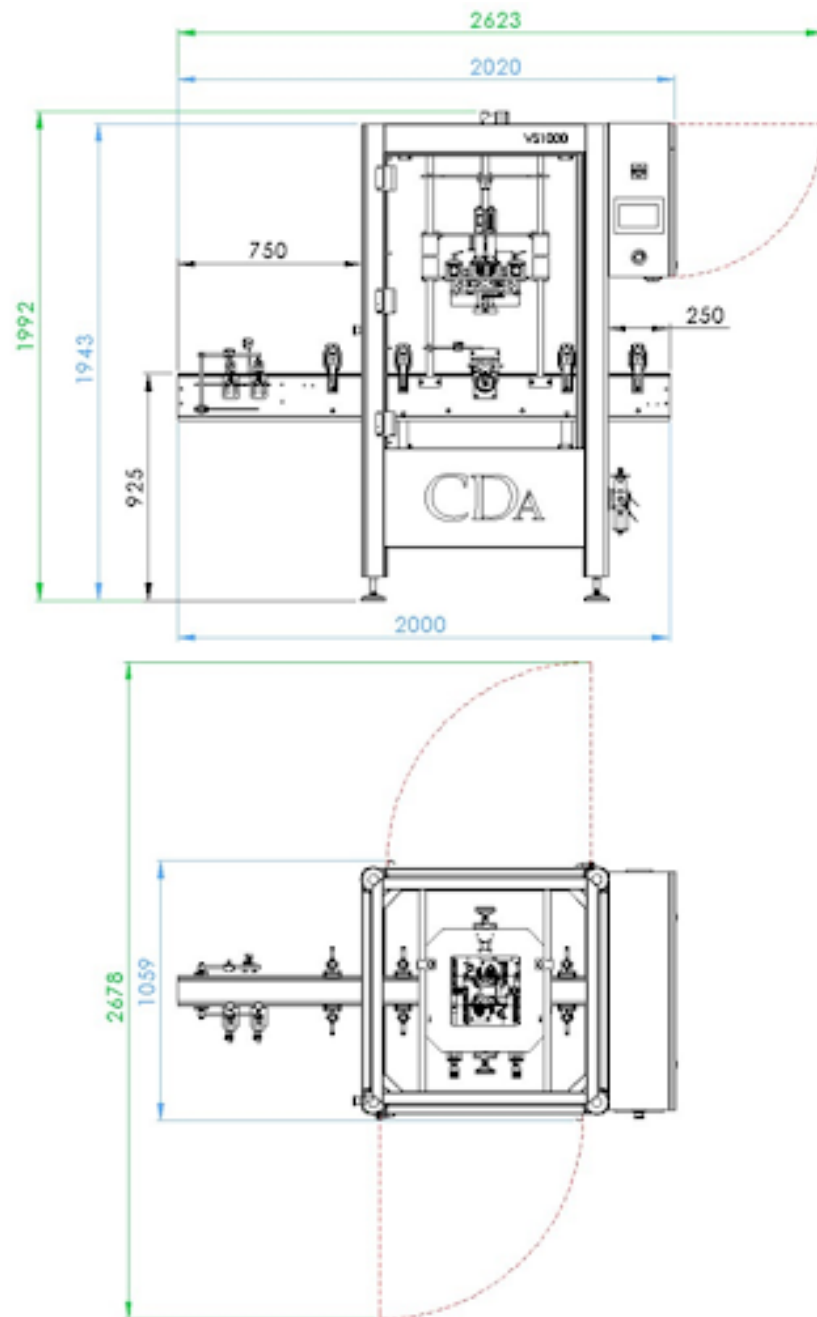
Technical focus n°5

INDEPENDENT FEEDING / ACCUMULATION TABLE

This table is installed at the entrance of the line to feed the bottles.

Independent feeding table (\varnothing 27.5" - 700mm / \varnothing 40" - 1000mm). It is equipped with :

- HDPE strapping
- A variable frequency driver to modulate the rotation speed
- A guide (adjustable) to bring the products to the entrance of the conveyor
- Jam sensor



Photos, prices and descriptions are indicative and non-contractual.